

# High School Registration

## 10<sup>th</sup> grade

South Campus Counselors:

Barbara Whyte (A–L)

Michelle McKenna (M–Z)

# What you should have

1. Blue Course Selection Sheet
2. Goldenrod Summer School Sheet
3. Tan Online direction sheet



# Course Guide

Course Guide is posted at

[www.arrowheadschoools.org](http://www.arrowheadschoools.org)

What is it?

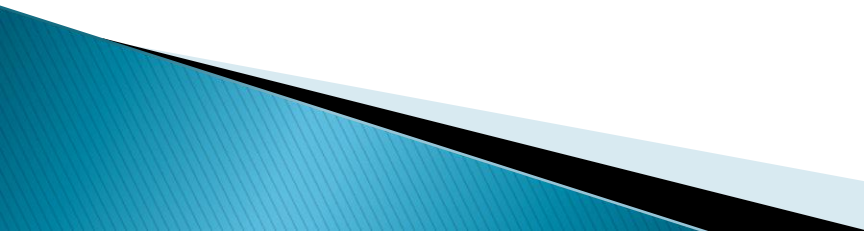
- ✓ Describes courses and possible prerequisites
- ✓ Graduation Requirements
- ✓ Has guidelines and information

# Graduating Requirements

1 class = one credit per semester

A D- is considered a passing grade!

# Graduating Requirements (continue)

- ▶ **8 Semesters of English**  
(Must include English 10 1&2 and English 11 1&2)
  - ▶ **6 Semesters of Social Studies**  
(Must include Government & U.S. History)
  - ▶ **6 Semesters of Science**  
(Must include 2 semesters of a natural science & 2 semester of a physical science)
- 

# Graduation Requirements (continue)

- ▶ 4 Semesters of Mathematics
- ▶ 2 Semesters of Vocational Education  
(Business, Family & Consumer Ed, & or Technology)
- ▶ 3 Semesters of Physical Education  
(Must be 3 different “type” of classes over 3 separate school years)
- ▶ 1 Semester of Health
- ▶ 2 Semesters of Fine Art  
( Music and/ or Art)
- ▶ 18 Additional Credits = Total 50 credits

# Course Selection Sheet

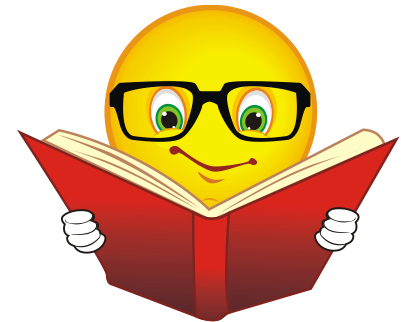
- ▶ Minimum and Maximum class load:
  - Carry minimum of 7 classes each semester
    - Leads to possible 3 study halls on one day and one on the other

**OR**

- Carry maximum of 8 classes each semester
  - Leads to possible 1 study hall every day or 2 every other day

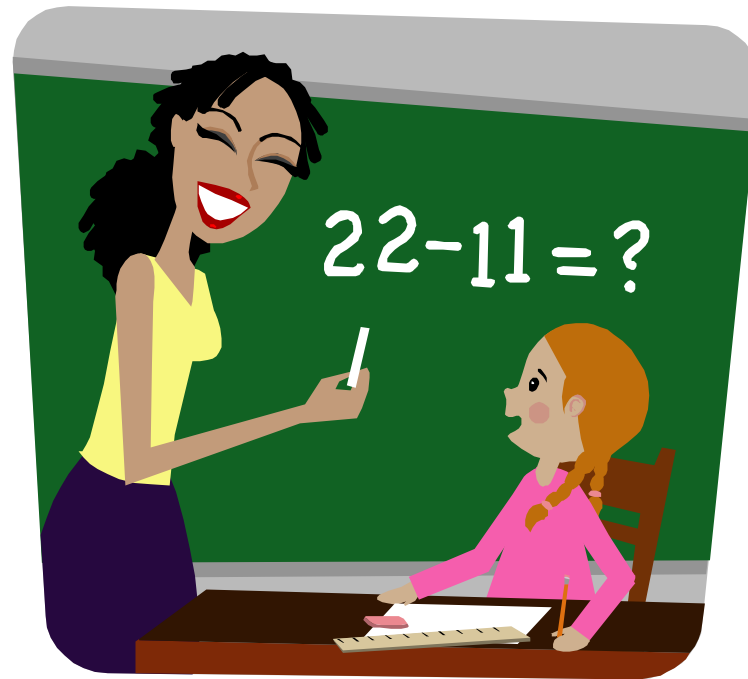
# English = 8 credits

- ▶ Adv. Composition – 1<sup>st</sup> or 2<sup>nd</sup> semester
  - *Practice in all types of writing*
- ▶ British Literature – 1<sup>st</sup> semester only
  - *Literature of England to the 17<sup>th</sup> Century*
- ▶ British Literature – 2<sup>nd</sup> semester only
  - *Literature from the 17<sup>th</sup> to the 20<sup>th</sup> Century*
- ▶ **English 10 / Gender English / Hon English 10** (Grad requirement)



# Mathematics = 4 Credits

Must have an Average of a C – or better to  
move  
to the next level



# Science = 6 Credits

## ▶ Biology



## ▶ Chemistry / Chem. Blk

- *Must have completed Algebra and Geometry or enrolled in Geometry/ Advance Algebra Blk*

## ▶ Physics / Physics Blk

- *Must have completed Algebra and Geometry or enrolled in Geometry/ Advance Algebra Blk*

# Social Studies = 6 Credits

- ▶ Adv. Pl. U.S. History (NC)
- ▶ Economics 1<sup>st</sup> or 2<sup>nd</sup> Sem. – *Economics System*
- ▶ Western Civ – *Various Civilizations form ancient to present*
- ▶ Political Science 1<sup>st</sup> or 2<sup>nd</sup> – *American Political System*
- ▶ **U.S. History/ U.S. History Blk– (Grad Requirement)**



# World Languages

- ▶ World Languages:

Need a 75 % to move to the next level



# Fine Arts = 2 credits

## ▶ Art

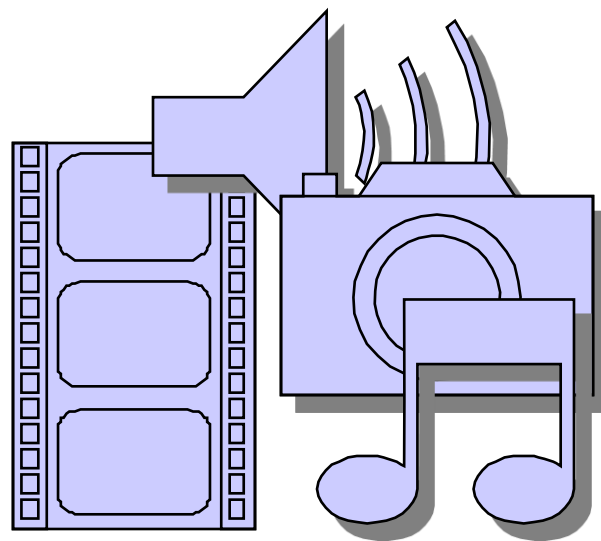
- \* Adv. Ceramics = 1<sup>st</sup> or 2<sup>nd</sup> semester only
- \* Adv. Draw/Paint = 1<sup>st</sup> or 2<sup>nd</sup> semester only
- Art Survey = 1<sup>st</sup> or 2<sup>nd</sup> semester only
- \*Intro to Ceramics = 1<sup>st</sup> or 2<sup>nd</sup> semester only
- \*Intro to Draw/Paint = 1<sup>st</sup> or 2<sup>nd</sup> semester only



# Fine Arts= 2 credits

## Music

- Baritone Choir (Boys only)
- \* Broadway Company
- Chamber Strings
- \*Jazz Band
- South Campus Bands
- \* SC Select Ensemble
- \*Symphonic Band
- Treble Choir (Girls only)
- \*Wind Ensemble



# Fine Arts = 2 credits

## ▶ Theater/Media

- Acting = 1<sup>st</sup> or 2<sup>nd</sup> semester
- \*Journalism
- Theatre Arts = 1<sup>st</sup> semester only
- \* Yearbook



# Vocational Educational Classes = 2 Credits (continue)



## Business & Marketing

- Accounting = 1<sup>st</sup> semester only
- \* Accounting 2 = 2<sup>nd</sup> semester only
- Computer Essentials = 1<sup>st</sup> or 2<sup>nd</sup> semester only
- Dollars & Sense = 1<sup>st</sup> semester only
- Intermediate Computer Applications = 2<sup>nd</sup> semester only
- Marketing & Business = 2<sup>nd</sup> semester only
- Medical Term = ( Recommended to take concurrently with Health Careers)
- Multimedia/Graphic Apps = 1<sup>st</sup> or 2<sup>nd</sup> semester only
- Super Write/ Study Skills = 1<sup>st</sup> semester only
- World of Business = 2<sup>nd</sup> semester only

# Vocational Education Classes = 2 credits

## ▶ Family & Consumer Education

- \*Adv Food & Nutrition = 2<sup>nd</sup> semester only
- Design & Clothing = 1<sup>st</sup> semester only
- Developing Relationships = 1<sup>st</sup> / 2<sup>nd</sup> semester
- Food & Nutrition = 1<sup>st</sup> or 2<sup>nd</sup> semester only
- Health Careers (Recommended to take Medical Terminology at same time)
- World of Children = 2<sup>nd</sup> semester only



# Vocational Education Classes = 2 credits (continue)

## ▶ Technology & Engineering

- Exploring Tech : Woods & CAD = 1<sup>st</sup> semester only
- Exploring Tech: Metals & Power = 2<sup>nd</sup> semester only
- Into to Engineering (PLTW) = 1<sup>st</sup> and 2<sup>nd</sup> semester
- Metals Fabrication = 1<sup>st</sup> semester only
- Metals Manufacturing = 2<sup>nd</sup> semester only
- Power Mechanics = 1<sup>st</sup> semester only
- Principles of Engineering (PLTW) = 1<sup>st</sup> and 2<sup>nd</sup> semester
- Woods Manufacturing = 1<sup>st</sup> or 2<sup>nd</sup> semester
- \*Woods manufacturing & Production = 2<sup>nd</sup> Semester only

# Health = 1 Credit

- ▶ Health

- All Health Classes will be gender unless you choose to opt take the code Health class.

# Physical Education = 3 credits

## Physical Education

- Club Arrowhead = 1<sup>st</sup> or 2<sup>nd</sup> semester only
- Phy. Ed. 10 = 1<sup>st</sup> or 2<sup>nd</sup> semester only
- Zero Hour Phy Ed. = Starts 6:20 every morning

Summer Phy. Ed. goes towards your Sophomore year



# Flexible Scheduling Option (FSO)

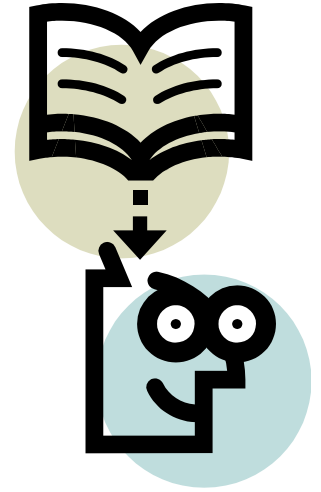
- ▶ FSO allows a student to either arrive at school 2<sup>nd</sup> hour or leave after 9<sup>th</sup> hour.
- ▶ **To qualify:**
  - Maintain a cumulative GPA of 3.0
  - OR
  - Earn a passing grade in summer school
- ▶ **Not qualify:**
  - Have a pre-expulsion, suspension or school-related police citation
  - Exceed 2 unexcused period absences per semester
- ▶ May take one less course or study hall

# Alternative Class

Choose one Alternative class  
for **EACH** semester



# Course selection sheets



Please *Choose your classes **Online***

## What I need to return

- ▶ Class selection printout
- ▶ The blue course sheet
- ▶ The summer selection sheet and printout (if want to do summer school)

All by Feb 3<sup>rd</sup> to the guidance office or study hall!!

# Course Selection Sheet



**While picking classes,  
please choice wisely!!**

When school starts, a student can not add a class, they can only drop a class and pick up a study hall.

# The End

If you have questions or concerns  
please ask your school counselor

