

# Arrowhead is falling behind.



**REVISED PLAN  
NEW SOLUTION**

**VOTE APRIL 1, 2025**

**ARROWHEAD HIGH SCHOOL**

# **Arrowhead is falling behind.**

**Arrowhead's facilities are falling behind other area school districts. Families are choosing other communities because the facilities are noticeably better.**

# Arrowhead's facilities are falling behind.

Our closest competitors recently addressed operations and/or renovated buildings:

- Oconomowoc - 2023 & 2016
- Hamilton - \*2024 & 2018
- Germantown - 2016
- Pewaukee - 2024 & 2018
- Kettle Moraine - \*2020, 2014, 2001

*\* \$7M+/year Recurring Operational Referenda*



Oconomowoc HS

# Arrowhead's facilities are falling behind.

Competing districts are passing referenda:

- Mukwonago - 2016
- Muskego - 2022 & 2016
- Cedarburg - 2019
- Nicolet - 2022
- Mequon-Thiensville - 2020



Kettle Moraine High School



# Arrowhead Cafeteria vs. Cedarburg Multi-Purpose Space



Undersized AHS



New open multipurpose cafeteria

# Arrowhead Theater vs. Verona Theater



Undersized Theater - AHS



Appropriately Sized Theater - Verona HS

# AHS Classrooms vs. Cedarburg Learning Spaces





# AHS Classrooms vs. Cedarburg Learning Spaces





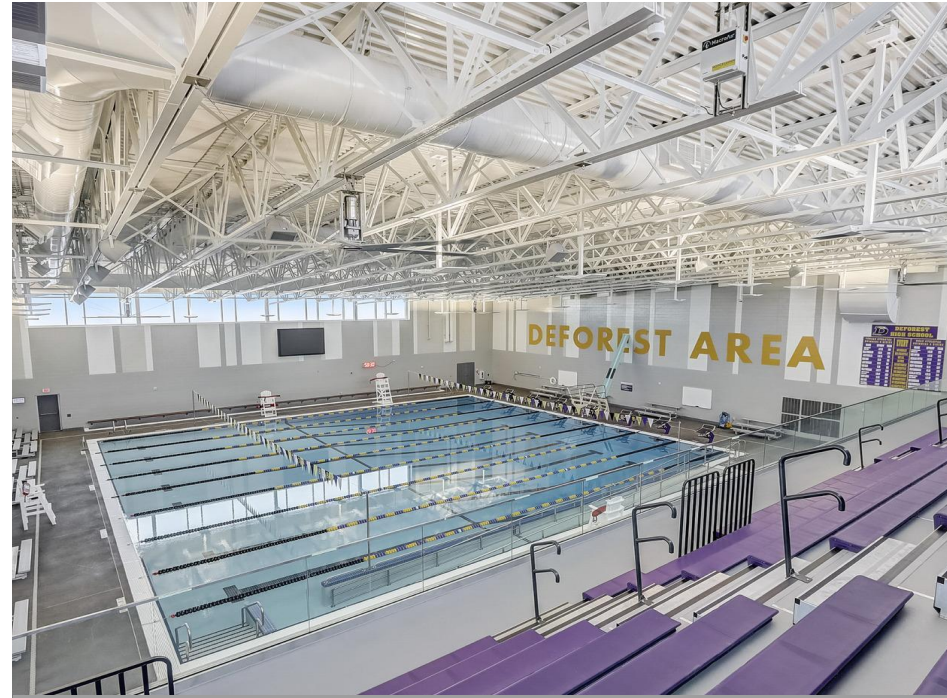
# Cedarburg Learning Spaces



# Arrowhead Pool vs. DeForest Pool



Undersized Pool - AHS



Appropriately-Sized Pool - DeForest HS

# Arrowhead Space vs. Franklin Collaborative Space



Lack of Collaboration Space - AHS



Collaboration Space - Franklin HS



# Natural Light Access - Arrowhead vs. Monona Grove

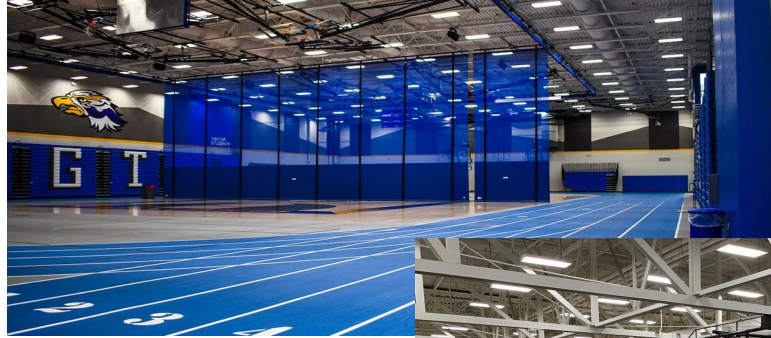


Lack of Natural Light & Limited Sight - AHS



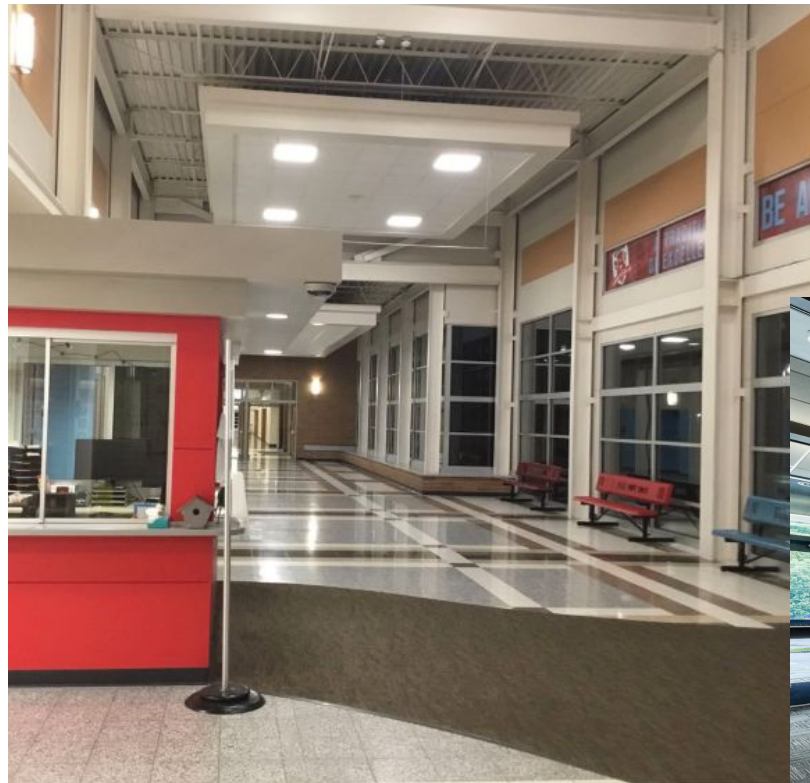
Transparency and Light - Monona Grove

# Gym Facilities - Arrowhead vs. So Many Others





# Safe/Secure Entrances - Arrowhead vs. Others







## Verona Comparison \$185 million in 2018

40%+ increase in construction costs = \$260 million + today  
Construction costs only go up...



# Will Arrowhead Compete?

According to the US News Ranking of High Schools, in 2015 Arrowhead ranked #4 in the state.

In 2022, Arrowhead ranked #15.

***This is the wrong trend that correlates to our decreasing enrollment and aging, outdated facilities.***

Year	Rank
2015	4
2016	7
2017	8
2018	6
2019	12
2020	13
2021	13
2022	15

# The Declining Enrollment Spiral



- When a school's facilities are not attractive, families enroll students elsewhere.
- Declining enrollment = cuts to programs & staff, difficulty attracting quality staff, less competitive extracurricular programs.
- Those cuts mean even fewer students enroll which contributes to more reductions.
- When districts do not draw students, the spiral leads to far less attractive schools and decreasing property values.